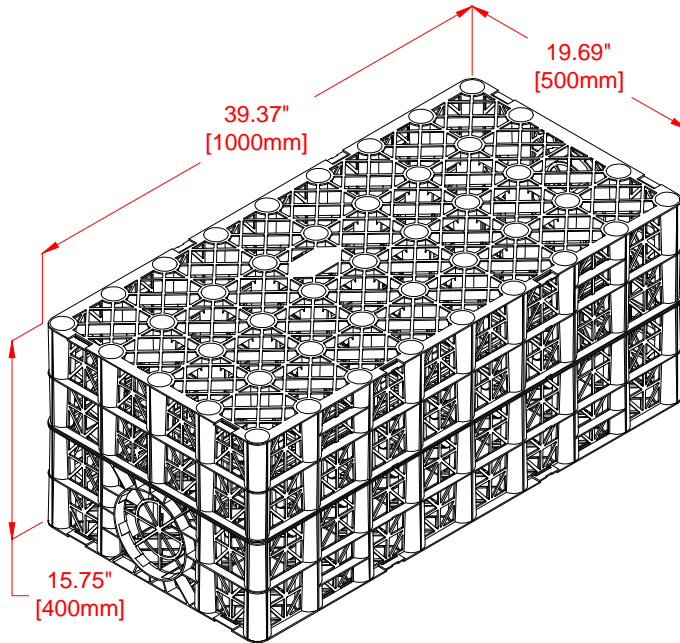




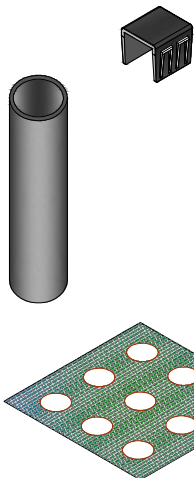
Permavoid MD (PV400) structural cells are a water management solution designed for both stormwater quality and quantity. High-strength units capture large volumes of water and promote more natural stormwater behavior through infiltration, retention or detention. Water quality is also enhanced within the system through patented Biomat filtration. The floating composite adsorbs hydrocarbons on the water's surface and allows microbes to naturally digest and eliminate the pollutant. Permavoid MD is suitable for many stormwater management applications ranging from high-speed, heavy duty traffic through landscape areas.



PHYSICAL PROPERTIES		
Material	Polypropylene	
Weight per unit	21.49 lbs	9.75 kg
Length	39.37 in	1000 mm
Width	19.69 in	500 mm
Depth	15.75 in	400 mm
Area per unit	5.382 ft <sup>2</sup>	0.500 m <sup>2</sup>
Occupied volume per unit	7.063 ft <sup>3</sup>	0.200 m <sup>3</sup>
STRUCTURAL PROPERTIES		
Vertical compressive yield	88.5 psi	610 kPa
Lateral compressive yield	9.1 psi	63 kPa
Vertical deflection strength	221 psi / in	60 kPa/mm
Lateral deflection strength	16.2 psi / in	4.4 kPa/mm
Vertical creep limit (60 year)	23.5 psi	162 kPa
Lateral creep limit (60 year)	4.5 psi	30.9 kPa
HYDRAULIC PROPERTIES		
Average perforated surface area	55 %	
Volumetric void ratio	95 %	
Void volume per unit	6.710 ft <sup>3</sup>	0.190 m <sup>3</sup>
OTHER PROPERTIES		
Recycled content	100 %	
Recyclability	100 %	
Country of origin	United States of America	

ACCESSORIES

GEOTEXTILES



**Clip Connector (PVCLIP)**  
4x required per unit

**Shear Connector (PVSP)**  
2x required per unit between layers

**Biomat Filter ( )**  
Floating hydrocarbon adsorbing / digesting filter  
Oil retention capacity 0.184 oz./ft<sup>2</sup> [56 g/m<sup>2</sup>]

The following are for guidance only. Refer to design documents for site specific requirements.

1. Non-woven fabric for separation and/or infiltration:
  - Tencate - Mirafi 1100N (or approved equal)
2. Woven fabric for separation and/or infiltration:
  - Tencate - Mirafi HP270 (or approved equal)
3. Waterproof Membrane Liner for retention and/or detention:
  - 40 mil HDPE or LLDPE (or approved equal)

Proprietary rights of ABT, Inc. are included in the information disclosed herein. The recipient, by accepting this document, agrees that neither this document nor the information disclosed herein nor any part thereof shall be copied, reproduced or transferred to others for manufacturing or for any other purpose except as specifically authorized in writing by ABT, Inc.  
Disclaimer: The customer and the customer's architects, engineers, consultants and other professionals are completely responsible for the selection, installation, and maintenance of any product purchased from ABT, and EXCEPT AS EXPRESSLY PROVIDED IN ABT'S STANDARD WARRANTIES, ABT MAKES NO WARRANTY, EXPRESS OR IMPLIED, AS TO THE SUITABILITY, DESIGN, MERCHANTABILITY, OR FITNESS OF THE PRODUCT FOR CUSTOMER'S APPLICATION. Copies of ABT's standard warranties are available upon request.



P. O. Box 837  
259 Murdock Road  
Troutman, NC  
(800) 438-6057  
(704) 528-9806  
www.ABTDRAINS.com