

# TRANSPORTATION



**An Industry  
Leader in  
Water Management  
Solutions**



**ABT<sup>®</sup>, INC.**  
**WATERMATTERS**

**ABT, Inc. has been creating and offering solutions for the challenges of drainage and water management in commercial construction since its founding in 1982.**

It began with PolyDrain, a pre-cast trench drain made from polymer concrete. The concept was simple; offer a modular, pre-sloped series of drain sections that could be assembled in the field to provide reliable drainage performance every time.

This innovation was the emergence of manufacturing products that replaced site-built drainage products with factory built performance, consistency, and reliability. Since then, owners, designers, and contractors have come to rely on ABT to provide performance based products offering solutions that address a wide variety of drainage and collection applications. Along the way, the company has acquired dozens of patents and awards for its many innovative products.

At the core of ABT's business philosophy is the desire to help create sustainable infrastructure that respects the value of Earth's water as a resource, not a waste product. To that end, products and technologies have been developed for surface drainage, stormwater management, Clean Water Act compliance, filtration, storage, and re-use. ABT proudly offers such widely known trade names as PolyDrain, PDX, TrenchFormer, FirstFlush, Interceptor, Terminator, Permavoid, CeraCrete and SportsEdge.

As our company has grown, so has the number of industries we serve. ABT now offers solutions for diverse applications such as residential and commercial construction, highways, airports, shipping ports, municipalities, athletic fields, and more.

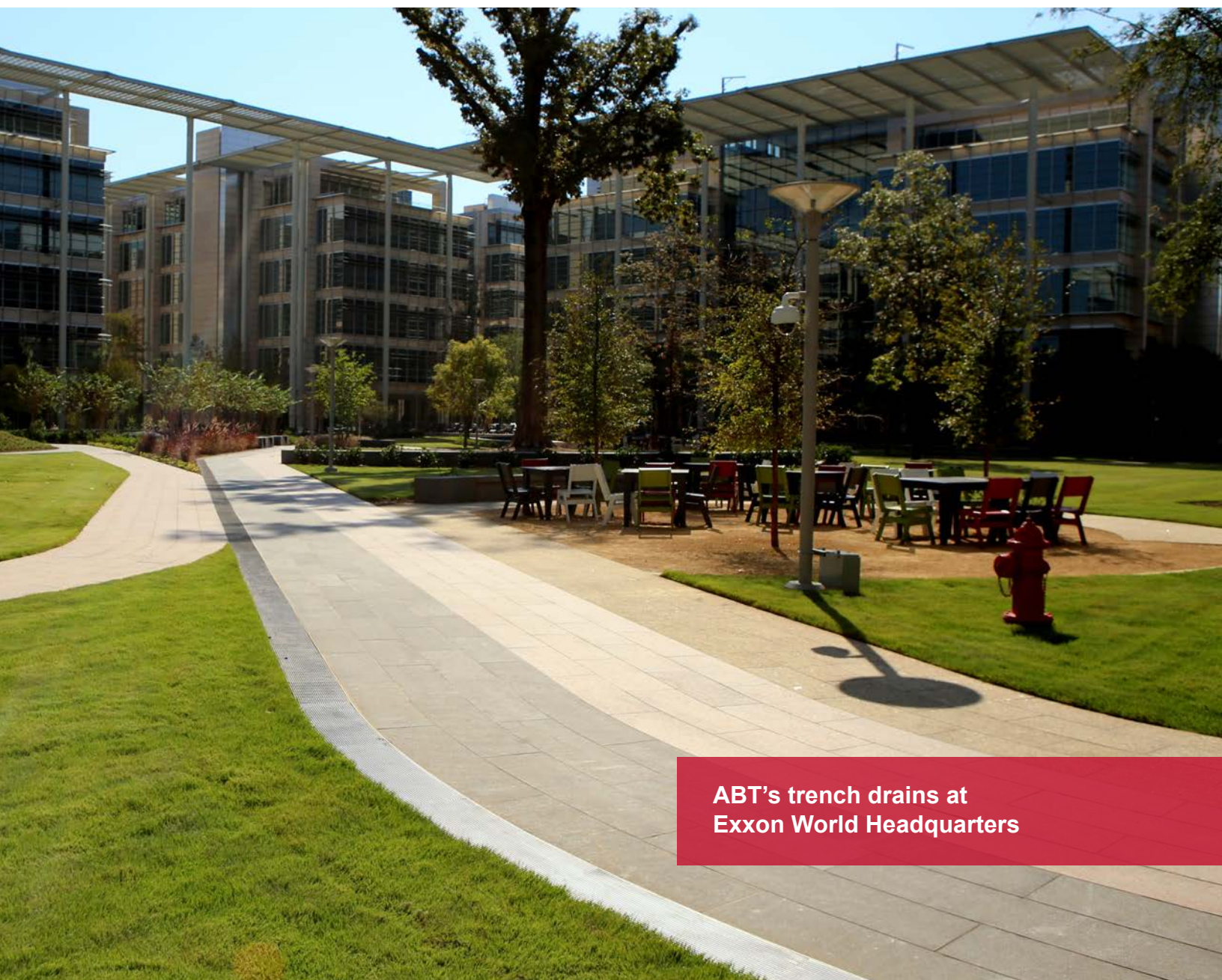




Through its distribution network, ABT sells throughout North America and has a number of customers in Mexico, Central America, South America, the Middle East, and North Africa.

Some of our customers include:

- The Port of Los Angeles
- Exxon World Headquarters
- The Port of Honolulu
- The Interstate Highway System
- Yankee Stadium
- Best Buy
- Ford Motor
- San Diego Bay Rapid Transit
- The Port of Long Beach
- SpaceX
- The Port of Houston
- NASA
- Toyota



**ABT's trench drains at  
Exxon World Headquarters**

With over a quarter of a million square feet of facilities, ABT's manufacturing capabilities now include: Polymer Concrete Molding; Metal Stamping, Forming, and Fabrication; Expanded Polystyrene Forming and Fabrication; and Insulative Ceramic Cement Production. Plans are now being developed for the addition of Injection Molding in the near future. ABT has also forged global alliances with innovators and manufacturers around the world in order to bring to our customers the benefits of the best ideas being generated in our industry.

## Our Values

Like with any successful business, our people are at the heart of our success. Among our more than one hundred employees, the average seniority with ABT is more than 12 years. That's a powerful testament to the loyalty of the ABT family. In an era when job hopping is the standard instead of the exception, people have chosen ABT as a career choice—not a stepping stone.

As our society now embarks upon a journey of environmental awareness, ABT is positioned to contribute products and practices that will help sustain our planet's most precious resource, it's water. We will continue to embrace new and exciting technologies, and will develop the products and people that will raise industry awareness of, and compliance with, water management regulations.

**We think of ourselves, in our own way, as stewards of a healthy planet.**



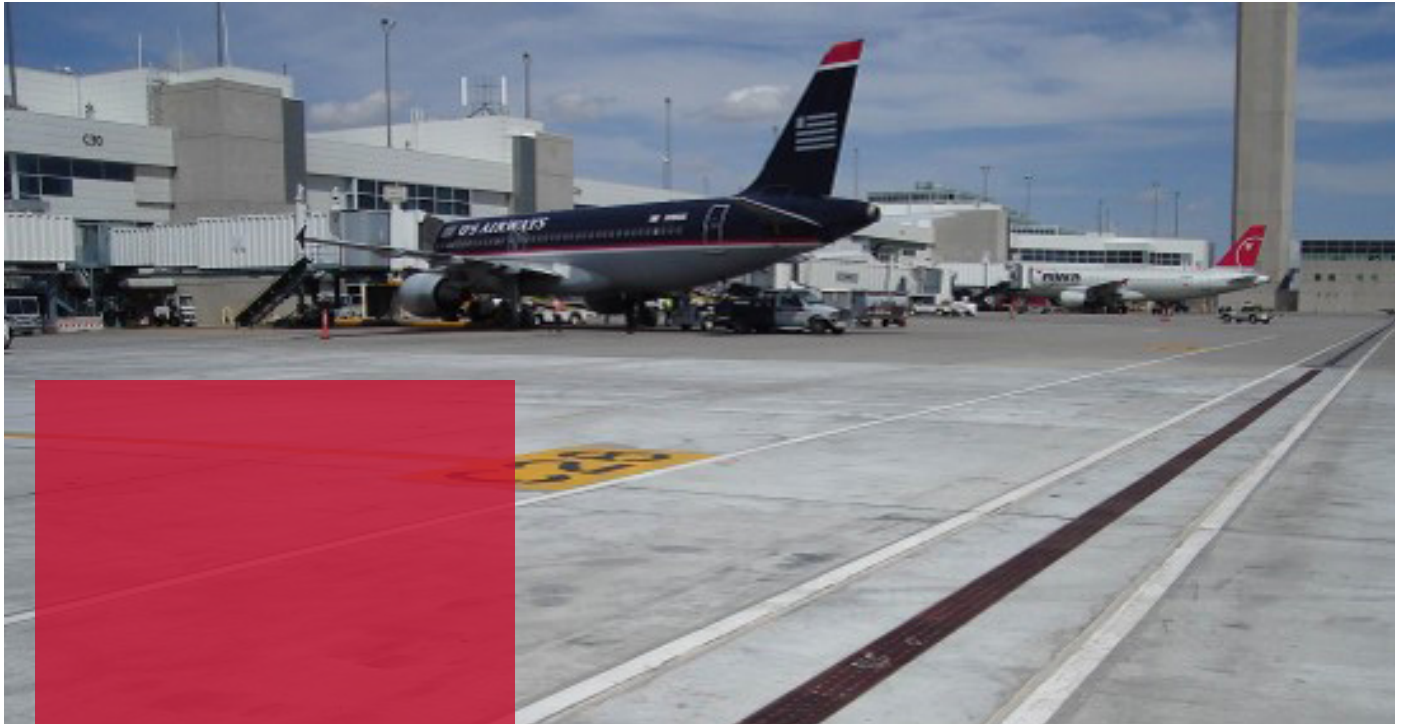




## Solar Powered Manufacturing Facilities

We are proud to be  
**“a company with a conscience”**  
both now and in the future.

# AIRPORTS



TrenchFormer XHD  
installed at the Denver  
airport

## Life Safety & Life Cycle

ABT has developed the most robust products for the extreme conditions present at commercial airports. Baggage carts, tugs, snow equipment, and huge jets impart constant dynamic and impact loads. A full line of channel drains and grates developed and manufactured by ABT, Inc. and ABT Metals, gives designers a range of options for all of their design approaches to these challenges.

These assemblies are conceived and manufactured with the highest degree of safety and the greatest longevity in mind. Modular systems install quickly and easily and offer greater durability than site-built systems. ABT line drain systems have been installed in dozens of airports including Denver, Bush/Houston, JFK/New York, and Charlotte.



# ROADWAYS



TrenchFormer installed  
on the Reno/Sparks  
Spaghetti Bowl



Highway barrier drainage

In 1994, the engineering firm of Edwards & Kelcey together with The New Jersey DOT issued a study comparing the performance of PolyDrain Trench Drains to traditional slot drains and drop inlets for roadway drainage. With the conclusions from that study and input from major civil engineering groups, ABT developed the first grated line drain/continuous inlet for roadways and highways in the US. ABT drains are now the current standard for major transportation departments and are currently the basis of design for the California and Texas Departments of Transportation (CalTrans and TXDOT). Since then, miles of PolyDrain and TrenchFormer trench drains have been installed on the US Federal Highway System in dozens of states from Florida to California to New York.



# PORTS



Patented Non-Rigid Retention

TrenchFormer XHD installed  
at the Port of Houston







## Longevity & Ecological Sensitivity

The challenges of designing and constructing commercial container ports are enormous. Elevated decks support hundred ton cranes that operate in an environment of salt water, tides, and constant punishing traffic. And they have to be efficiently drained by products that can withstand this environment.

Until the introduction of modular ABT drains and their non-rigid retention systems, failures of site built drainage systems plagued this industry for years. ABT drains have since become the products of choice for this dynamic market and are used to capture, convey, filter, infiltrate, store, and re-use storm water without a single product failure.

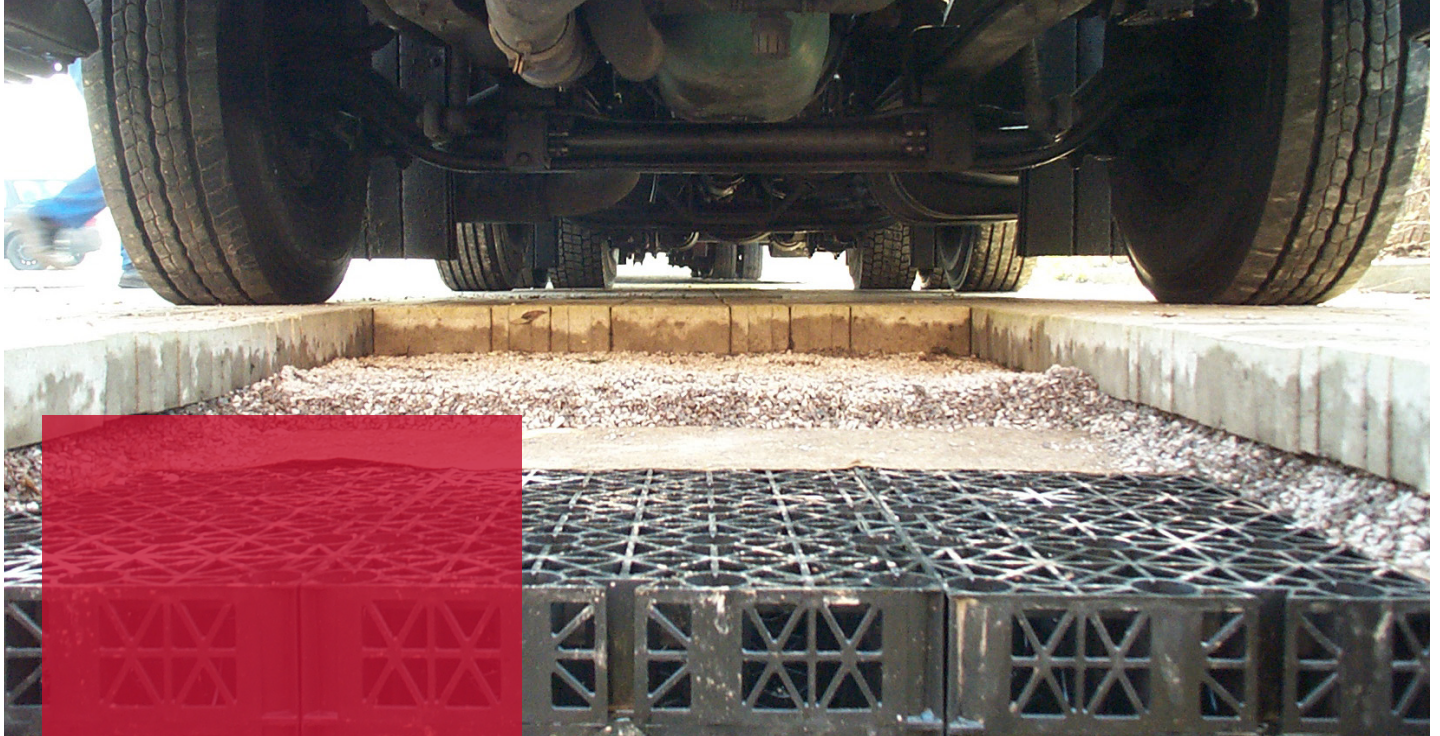
## Cable Trench

As the ports embarked on programs to convert traditional diesel-powered gantry cranes to electric, the industry was looking for long term solutions to replace existing stainless cable conduits. The continuous cable fed spooling apparatus was both expensive in construction and high in maintenance cost. Using the TrenchFormer philosophy, ABT created and patented a reusable concrete structure with replaceable belt retention devices. The ability for a quick change without expensive demolition work lowered the cost to own and construct with a superior product.





# SUSTAINABILITY



Sub Base Replacement

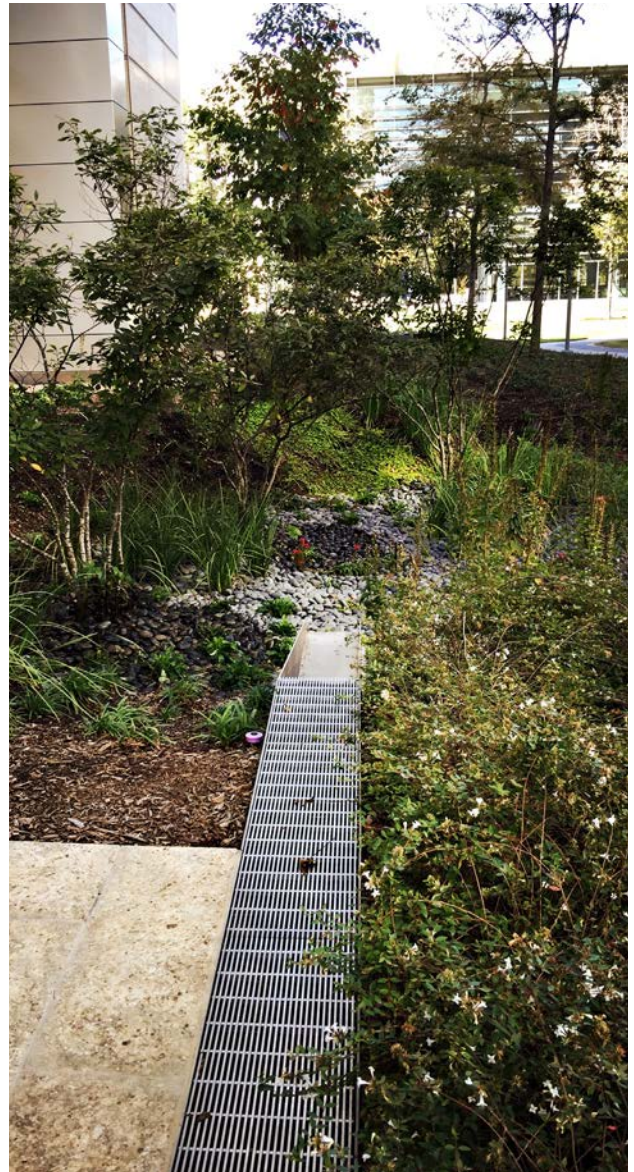
## Low Impact Development

Sustainability plays a critical role in all facets of ABT corporate decision making. These principles are the framework for the development of a line of product offerings that address the demands of Low Impact Development as mandated by the Federal Clean Water Act. Products like PolyDrain, whose superior chemical resistance prevents dangerous contaminants from entering our groundwater. TrenchFormer, whose design versatility allows stormwater to be routed further to areas where it can be utilized as a resource, not treated as a waste product to be discarded. FirstFlush whose hydrocarbon and suspended solids contaminant removal capabilities help clean our most precious resource. And finally Permavoid, the hallmark of our sustainable products, whose ability to mimic natural stormwater behavior is unparalleled in the industry.





**ABT Permavoid being installed  
at the JFK Plaza**



**ABT's stainless runnel  
installed in a rain garden**



## LIGHT RAIL



As Low Impact Development and Mass Transit intersect, ABT offers products that not only enhance the aesthetics in the urban environment, but also provide sustainability solutions for stormwater management and rider safety. ABT's creative engineering and state of the art manufacturing techniques offer the owner "life safety and life cycle" low-cost solutions.



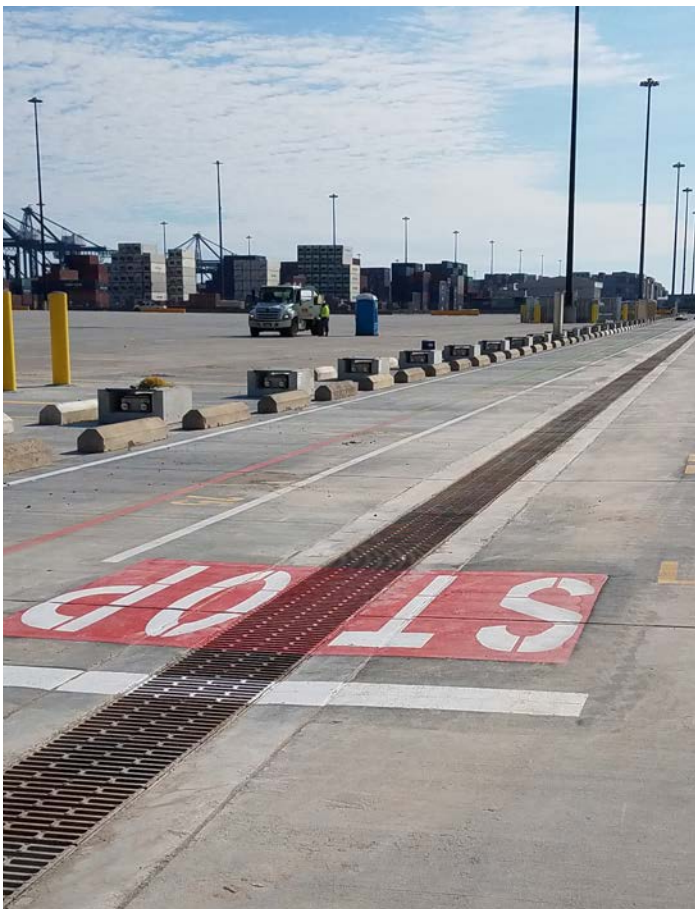


## INSTALLATIONS



Patented trench forming devices and methods enable the contractor to reduce the manpower on site and reduce construction times while providing the owner and engineer with a higher quality product by pre-engineering the critical parts, and at times sending complete assemblies to the project.

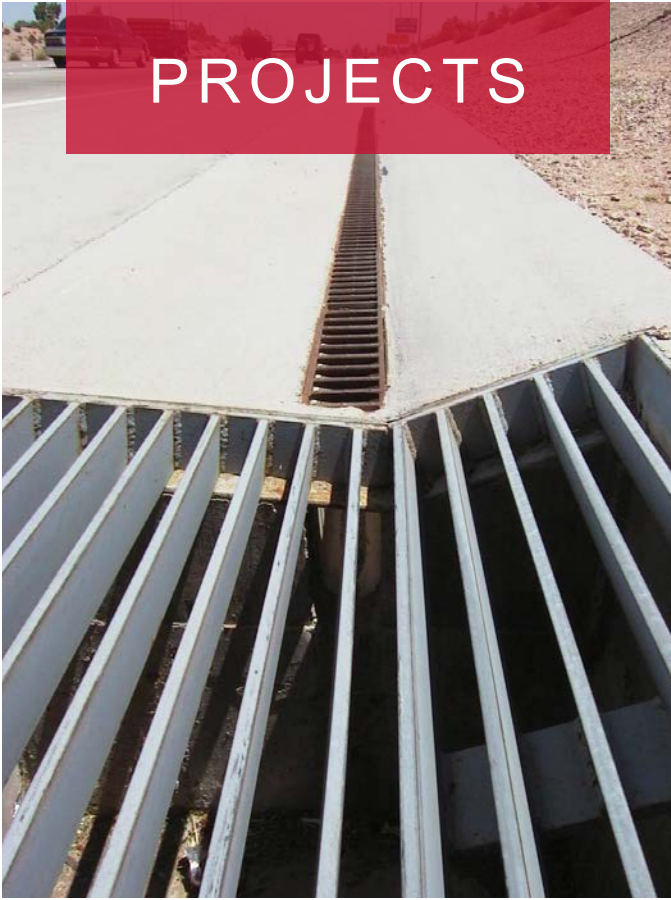






# PROJECTS

The agility of ABT regarding unique project solutions is demonstrated in the various installation photos in this sub-section. The versatile methods and means are unmatched in the industry.



# Explore our innovative solutions

Visit [www.abtdrains.com](http://www.abtdrains.com)



800.438.6057



[info.abt@abtdrains.com](mailto:info.abt@abtdrains.com)



259 Murdock Road, Troutman, NC 28166



## Water Management Solutions That You Can Trust.

Zoku, Amsterdam

**DISCLAIMER:** The customer and the customer's architects, engineers, consultants, and other professionals are completely responsible for the selection, installation, and maintenance of any product purchased from ABT, and EXCEPT AS EXPRESSLY PROVIDED IN ABT'S STANDARD WARRANTIES, ABT MAKES NO WARRANTY, EXPRESS OR IMPLIED, AS TO THE SUITABILITY, DESIGN, MERCHANTABILITY, OR FITNESS OF THE PRODUCT FOR CUSTOMER'S APPLICATION. Copies of ABT's standard warranties are available at [www.abtdrains.com](http://www.abtdrains.com).

The information contained within is believed to be accurate but not guaranteed to be so. The customer should evaluate the suitability and safety of these products for any application. ABT assumes no liability for the end results since the conditions of installation and use are beyond the control of ABT. Concrete specifications, placement, reinforcement, and structural considerations are the responsibility of the customer. ABT reserves the right to change the price, availability, specifications, and content of any of its products, literature, or other information in all media at any time without notification.

PolyDrain®, PolyDyn®, PolyChampion®, GreenDot®, RedDot®, PolyWall®, TrenchFormer® are registered trademarks of ABT, Inc.®. USA Patent Numbers 5,281,051; 5,348,421; 5,393,171; 5,399,047; 5,573,350; 5,702,204; 5,890,839; 6,443,656; 6,533,497; 6,926,245 : Canada 2,080,136; 2,131,866; 2,131,867; 2,139,405; 2,139,407 : Mexico 189,218; 189,436; 197,851 : Other US and foreign patents pending.

6/23/2023-01