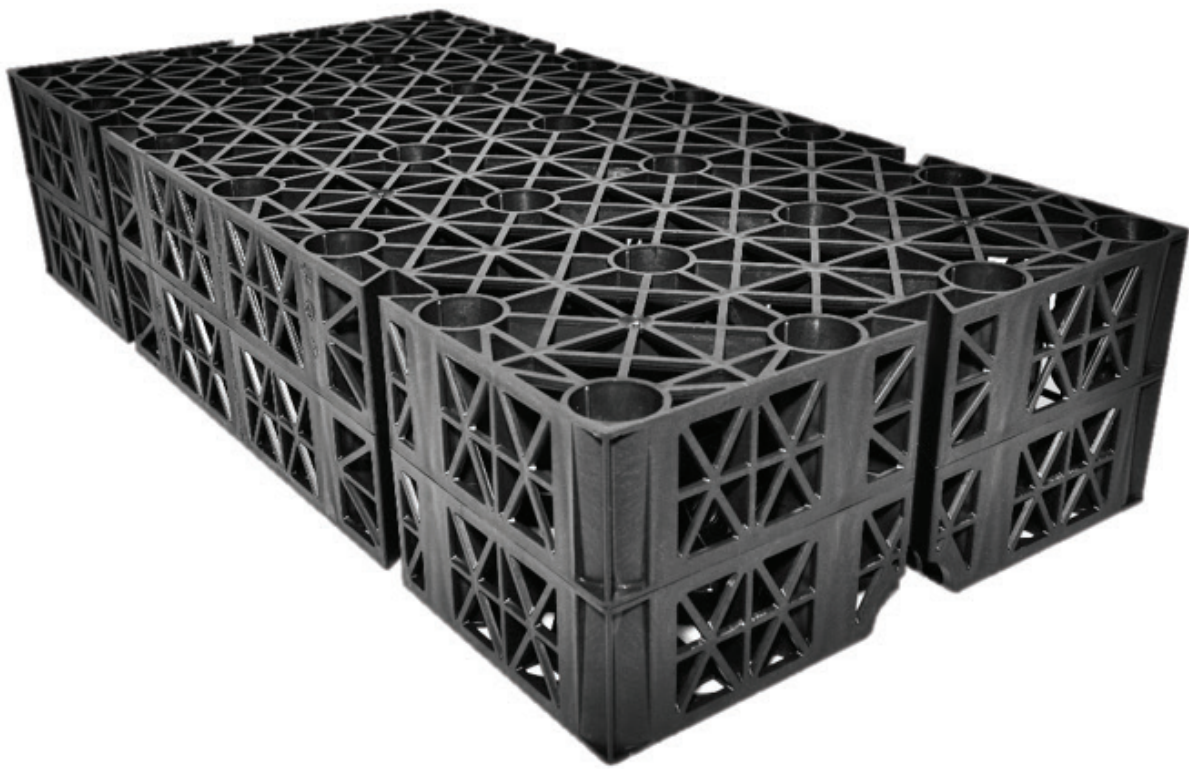


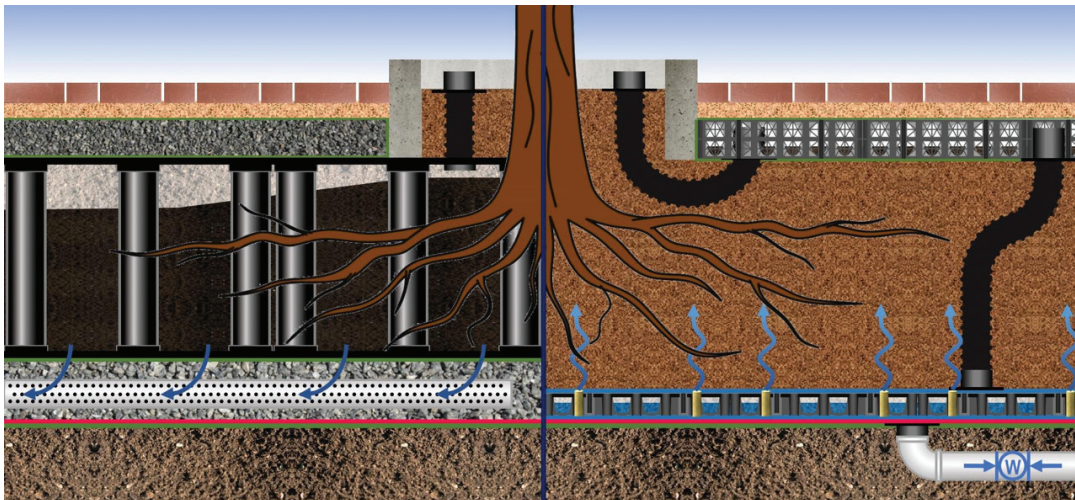
# Permavoid

## Water Management Solution For Urban Trees



## Permavoid® Urban Tree Support

Permavoid structural cells are multi-functional water management solutions that promote sustainable stormwater behavior. The interconnected, robust units create a patented subbase replacement system that attenuates stormwater flows and promotes infiltration beneath impervious surfaces. Units can be stacked to create multi-layer tanks to fit nearly any site constraints while eliminating the need for traditional conveyance schemes. Additionally, Permavoid systems enhance landscape resiliency through patented capillary cylinders that wick stormwater up toward vegetation without the need for sprinklers, pumps, or energy. Permavoid systems are the foundation of resilient, sustainable infrastructure.



### More Rootable Volume

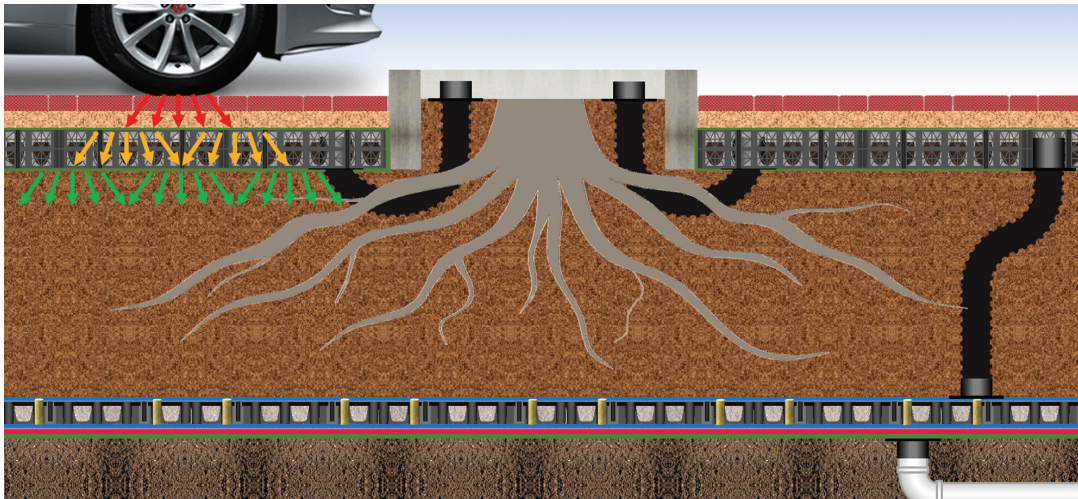
The geometric shape and structural design create more room in the tree pit for soil volume than non-structural columnar modules.

### Water On Demand

Permavoid's unique design retains water for optimal photosynthesis and does not drain it away.







### Structural Loads

The arched webbing and internal trapezoidal gusset design enable direct loading and the bridging of dynamic substrates.

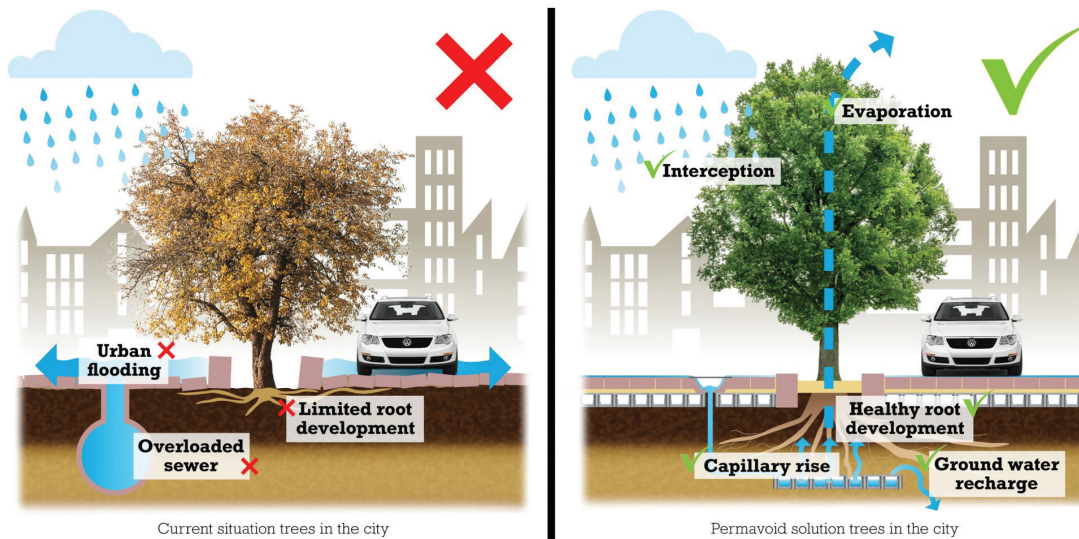


Permavoid systems protect infrastructure, reduce supplemental watering, and promote healthy root development, lowering the cost of ownership.

### Non-Mechanical Water Harvesting

The mineral wool water columns and subbase wicking fabrics facilitate passive irrigation without the need of mechanical devices to re-use stormwater.





## Enhanced Curve Number

Urban forests built on Permavoid modules enable commercial use of existing developed surfaces while managing the water below as if the site were undeveloped.

## Visit [www.abtdrains.com](http://www.abtdrains.com)

ABT designs and manufactures some of the most extensive, reliable, and versatile lines of channel drains, grates, and water management solutions in the industry. If you're an engineer or designer and need performance-based specifications and details for your project, we can help.

Visit [www.abtdrains.com](http://www.abtdrains.com) for details on all our products.



### ABT,® Inc.

PO Box 837  
259 Murdock Road  
Troutman, NC 28166  
[www.abtdrains.com](http://www.abtdrains.com)  
Toll-free: 800.438.6057  
Phone: 704.528.9806

**DISCLAIMER:** The customer and the customer's architects, engineers, consultants and other professionals are completely responsible for the selection, installation, and maintenance of any product purchased from ABT, and EXCEPT AS EXPRESSLY PROVIDED IN ABT'S STANDARD WARRANTIES, ABT MAKES NO WARRANTY, EXPRESS OR IMPLIED, AS TO THE SUITABILITY, DESIGN, MERCHANTABILITY, OR FITNESS OF THE PRODUCT FOR CUSTOMER'S APPLICATION. Copies of ABT's standard warranties are available upon request.