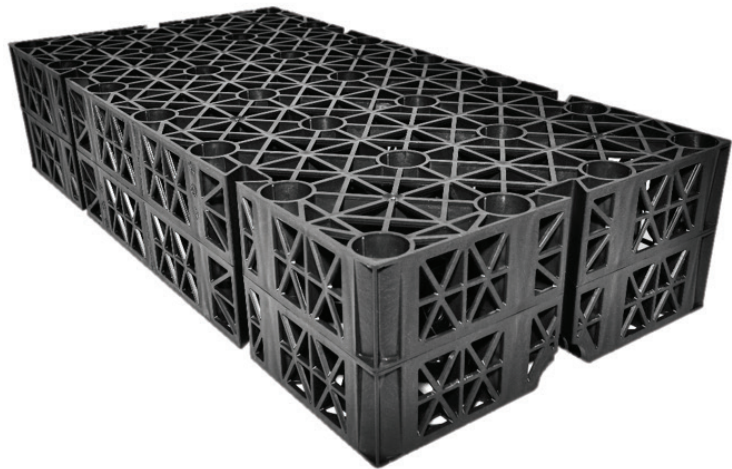


Permavoid

Permeable Modular Subbase



Permavoid Permeable Modular Subbase

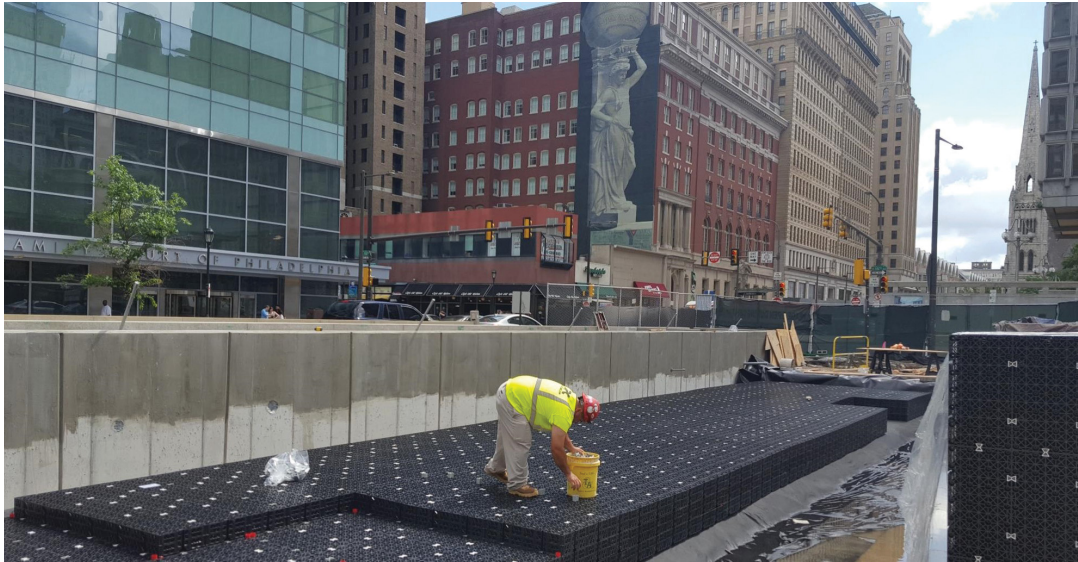
Modular units with a 95% void ratio and ultra-shallow profile form a monolithic stormwater control structure that reduces the impact of urban development by cultivating the natural movement of water within the local ecosystem and watershed. The high-strength polypropylene raft is also ideal for subbase, deep conveyance pipe, and water detention replacement, and eliminates the costs associated with deep excavations, backfill materials, and potential subgrade conflicts including bedrock, contaminated ground, buried utilities, and high water tables.



Sustainability & Low Impact Development

Originally designed to construct roads on peat in Holland, Permavoid is a replacement for structural subbase, enabling stormwater management through infiltration or non-mechanical irrigation. The detention and reuse have an added benefit of requiring 40% less space than stone. This creates a shallow profile while producing a developed site that behaves as if it were undeveloped.





PermaVoid Structural Raft

The mechanical interlocking keys create a monolithic raft that distributes heavy vehicular loads over a greater area and insulates the pavement from dynamic substrate conditions from below.



Reduced Carbon Footprint

One truckload of PermaVoid keeps 27 truck loads of stone off the road, eliminating their carbon discharge and wear and tear on the existing infrastructure. This greatly enhances pavement life and reduces traffic administration.

Shallow Excavation

The cost to develop a site is significantly reduced as the water management components require less excavation and minimize cut and fill.





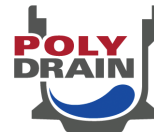
More Useable Area

Maximize your site's developable area and land value using Permavoid infiltration beneath impermeable pavement.

Visit www.abtdrains.com

ABT designs and manufactures some of the most extensive, reliable, and versatile lines of channel drains, grates, and water management solutions in the industry. If you're an engineer or designer and need performance-based specifications and details for your project, we can help.

Visit www.abtdrains.com for details on all our products.



permavoid

ABT,® Inc.

PO Box 837
259 Murdock Road
Troutman, NC 28166
www.abtdrains.com
Toll-free: 800.438.6057
Phone: 704.528.9806

DISCLAIMER: The customer and the customer's architects, engineers, consultants and other professionals are completely responsible for the selection, installation, and maintenance of any product purchased from ABT, and EXCEPT AS EXPRESSLY PROVIDED IN ABT'S STANDARD WARRANTIES, ABT MAKES NO WARRANTY, EXPRESS OR IMPLIED, AS TO THE SUITABILITY, DESIGN, MERCHANTABILITY, OR FITNESS OF THE PRODUCT FOR CUSTOMER'S APPLICATION. Copies of ABT's standard warranties are available upon request.

10/10/2023